




shoreham port

ISSUE
#7

PORTlife



INSIDE

- Investment and development on horizon
- Community art project - winners announced
- Meet our people
- 3.5 Acre opportunity opens up at the Port



PORTlife 7: Investment and Development on the Horizon



Rodney Lunn – Chief Executive

Another year passes quickly and we welcome 2013.

All the messages from the Bank of England and other institutions are about challenging times and patience, however, at Shoreham Port we remain optimistic for the future. The Port is well positioned with the recent investments in infrastructure and equipment and this will hold us and our stakeholders in good stead, as we move forward together. The Port provides excellent facilities and customer service, which means ships and cargo can be turned around quickly and efficiently, saving our customers time and money.

2013 will see further developments in the Port, as we look to maximise all the available land in the East arm for cargo operations, whilst we work with local authorities and other tenants in the West arm to find the most appropriate balance for development. We are sorry to see the Texaco terminal close after 46 years, however, it is an excellent location in the heart of the Port, and we look forward to attracting new business to this site.

Supporting the local community will again be a big priority in 2013 and I thank everyone for their continued interest and comments on the Port. The Ports green credentials and

environmental policies are improving and increasing each year, and after some notable successes last year, including achieving Eco Port status, we look to further build on this solid foundation. The recycling of material and exporting by ship to other destinations has an exciting future at the Port, as Shoreham is well suited for the size and quantities of cargoes carried.

We wish our stakeholders all the best for 2013 and look forward to working and helping each other through the current challenges.



Alan Motterham – Commercial/Operations Director

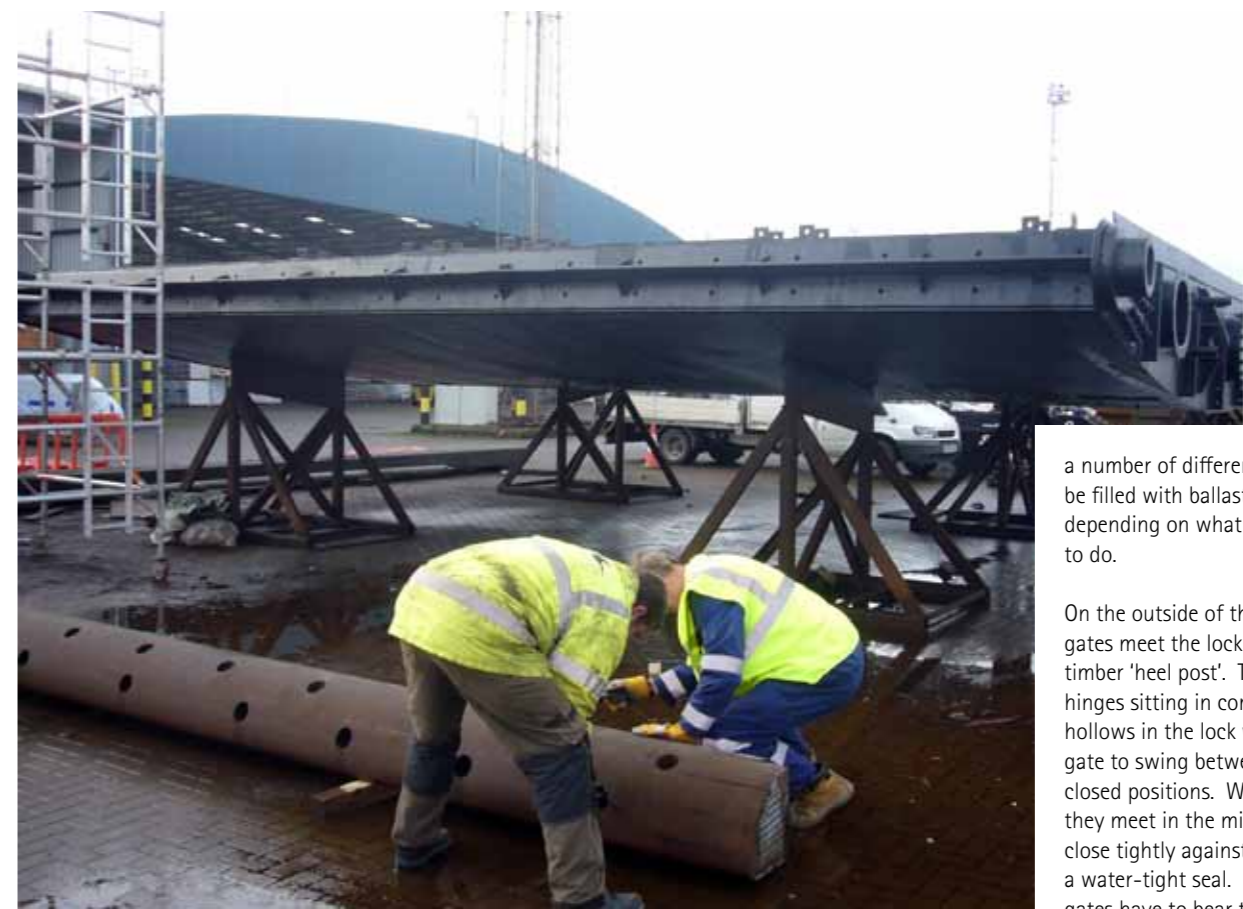
Delivering Efficiency to Our Customers

We are committed to delivering excellence to our customers and pride ourselves on our efficient ship to shelf service.

We have invested heavily in our hydraulic cranes over the past few years and have a collection of two Sennebogen 870 M Specials, one 880 EQ and our newest 880 Classic Mobile. We appreciate that our customers are feeling the pinch in a tough economic climate and therefore have focussed our efforts on streamlining our operations in order to deliver an efficient and economical service to our customers.

Timber ships are unloaded at the rate of 300 – 420 cubic meters per hour, which equates to 75 – 120 packages per hour per crane. Bulk cargoes are unloaded at the rate of 300 – 950 tonnes per hour, dependant on the density of the cargo and the number of cranes being used. Our highly skilled workforce maintains our equipment. They take pride in their work and take care of our equipment to ensure it remains in excellent condition.

Our fleet of Yale forklifts that were delivered in June are performing very well and our staff are pleased with their performance. So much so we have ordered another eight for delivery at the end of March.



Tony Parker – Director of Engineering

a number of different chambers which can be filled with ballast water or emptied out depending on what you want the gates to do.

On the outside of the gates, where the gates meet the lock walls, is a circular timber 'heel post'. The heel posts form hinges sitting in corresponding circular hollows in the lock walls allowing the gate to swing between the open and closed positions. When the gates close, they meet in the middle of the lock and close tightly against each other to form a water-tight seal. In this position, the gates have to bear the load of up to 2,000 tonnes of water!

Port Engineers Rebuild Spare Lock Gates

In between the myriad other jobs to be done, Shoreham Port's Engineering Department have spent much of this year refurbishing the spare pair of lock gates for the Prince Philip Lock.

After 23 years in the water, the gates needed a thorough cleaning inside and out, with many new steel plates and fittings welded in place. Then the gates were fitted with new access ladders, hatches and seals before being given several coats of a special, marine-grade paint. The hard-working cast steel bearings at the top and bottom of the heel post were rebuilt together with the phosphor-bronze bearing inserts and new timber heel posts weighing one tonne each were shaped by a specialist sawmill. Our picture above shows the heel posts being made ready to fit to the gates by our engineers Carl Aichroth and Don Butcher.

We have also taken the opportunity to improve the gates in a number of important areas, making them more user-friendly, for instance, by designing to reduce the need for port staff to climb inside the gates to undertake essential maintenance.

It's been a huge task and hard work, with innumerable factors to be taken into account, but the shiny black gates look almost brand new now and it's something the whole Engineering Team and our suppliers and contractors can feel truly proud of.



The Prince Phillip Lock has a pair of gates in service at each end at all times and a third pair is always kept available in case they are needed at short notice. With ships of up to 6,000 tonnes passing through the lock every day, you need to be ready for emergencies!

The pair of gates receiving lots of love and attention at the moment were swapped out of service nearly a year ago after undertaking 23 years of hard service in place at the west end of the lock. The gates, each weighing 60 tonnes and measuring ten metres square, are mostly made of steel and heavy hardwood with various more exotic materials for specific, special fittings. The gates are each essentially a hollow steel box divided into



1ST



Sara Bassett - Finance Director



Community Creations of Shoreham Port Unveiled

2ND



An enormous thank you to everyone who entered our Community Art Project. We were delighted by the large number of entries and the quality and diversity of the artwork submitted.

After much deliberation Alan Warren's vibrant and detailed oil pastel painting of our dry dock was awarded first place. Our runner up was Caroline Shaw, for her modern interpretation of the Port using a collage. Last but not least, third place went to Anne Light for her beautiful and elegant triptych canvas painting of the West Arm.

Running the Community Art Project was an excellent way to engage with local artists and we are delighted to have received so many entries and of such a high standard. The top three paintings are individually very different but all represent the Port in a unique and distinguished way. The winning artwork is showcased at Southwick Station for all to see and to make Southwick Station stand out to the many hundreds of visitors that pass through.



3RD

We are always looking for new community projects and different and creative ways to engage with our local community. We would welcome any suggestions for new initiatives. Please email any ideas to Katie Orchin Korchin@shoreham-port.co.uk or call into the office to discuss these with us.

Putting Health & Safety First



Paul Johnson - Safety & HR Director

All stakeholders to benefit as Shoreham Port invests in Automatic External Defibrillators (AEDs).

We now have two defibrillators based at the Port. One of which will be located in the hub of the Port at Shoreham Harbour Radio (sometimes referred to as the lock island) and the other one will be held at our Operations Division office.

AED's are small, portable, and easy to operate lifesaving medical devices which are designed to deliver an electrical shock to a person who is having a Sudden Cardiac Arrest (SCA) medical emergency. They are designed to be used by a first responder, such as our own first aid staff that have been trained in the use of AED's to save the life of an unconscious victim.

For the best chance of survival an AED should be used within the first 3-5 minutes after collapse. Currently less than 5% of victims survive largely because a Defibrillator does not arrive in time. An AED can increase the survival rate to 50%.

“It is vitally important that we cater for all eventualities and our commitment to the health and safety of all our stakeholders, customers and visitors to Shoreham Port remains our number one priority.”

Get an E-Alert!

Sign up to our free E-Alerts to receive the latest news, events and job updates from the Port. You can select how often you receive the updates and filter the categories to ensure you only receive information on topics of interest to you. It is quick and easy, simply log onto www.shoreham-port.co.uk/eAlerts or call: 01273 598100 for assistance.



A Day in the Life of Sharon Penfold

Sharon Penfold joined Shoreham Port in September to provide maternity cover for reception. Due to the diversity of business at Shoreham Port Sharon carries out a variety of tasks that are not always associated with those of a Receptionist. Sharon's duties include welcoming visitors to the Port, assisting with accounts administration, updating the Port's public notice boards and helping with the planning of corporate events and meetings. No two days are ever the same for Sharon with the sheer variety of calls and visitors that contact the Port.

A vital part of Sharon's job is prioritising and juggling tasks whilst working with a broad range of staff across both of the Port's offices.

Sharon works at the Port from 8.30am to 5.30pm on weekdays, however her work does not stop there. She dedicates a huge amount of time to charity, particularly the NSPCC and the Sussex MS Treatment Centre in Southwick.

Sharon is also a Trustee for the newly registered charity Friends of Shoreham Fort and commented "although there is a lot of hard work involved behind the scenes, the Friends of Shoreham Fort are a great bunch and it is very satisfying knowing that I am doing my bit to save this nationally important piece of heritage." Sharon also enjoys a weekly Zumba class but confesses that since starting at the Port she has become very fond of chocolate!

“This is such a diverse and varied role due to the nature of the enquiries we receive at the Port. It's great to be working in such a unique environment – I don't think I will ever get used to seeing the large ships going past the windows.”



Peter Davies – Development Director



3.5 Acre Opportunity Opens up at the Port

Valero announced last autumn they were closing their fuel depot at Shoreham and from now on will be supplying their Texaco filling stations in the Sussex area from their larger depot in North Kent. Most of the staff have been offered other jobs elsewhere in the company.

The depot opened in 1966 and has been a very well run and maintained facility ever since. Shoreham Port own the 3.5 acre site and are now considering various options for its future use with Valero. The fuel tanks are likely to be demolished unless a suitable use can be found for them. It is a large valuable site with good road access from the A259 with a long deep berth for ships.

We see this as a great opportunity to attract a new port operator to Shoreham to add to the growing diversity of uses and to continue to increase the number of ships through the Port.



Diary of Events

18 April 2013 Port Users Group

18 April 2013 Local Authority Liaison Committee

17 February 2013 Brighton Half Marathon

14 April 2013 Brighton Marathon

02 July 2013 Shoreham Port's Annual Public and Stakeholders Meeting

17th July 2013 Brighton Phoenix 10k Race

Please see our website for latest details and venues www.shoreham-port.co.uk



Tenants on the Port

New Tenant Motoring Forward at Port

We are delighted to welcome another new tenant, Hove Bay Autos to a site adjacent to Hove Enterprise Centre on Basin Road North.

A dilapidated building which previously stood on the site has been removed providing an ideal space for this car sales company. Hove Bay Autos will complement and provide business for the neighbouring automotive trades.

Hove Bay Autos specialise in used car sales, warranty and part exchange. The company is run by Denver Ottewell and Philip Biffen, local residents who each have over 20 years of experience in the motor trade. Philip commented that "the Port makes perfect sense for our business location as it is easily accessible from

both Brighton and Hove. We have found the experience of being a port tenant very pleasing with much more help than we expected."

We are delighted that a successful local business chose to relocate from central Hove to Shoreham Port. Their arrival adds a further trade to the wide range within the business community of Basin Road North and Hove Enterprise Centre.

For more information on Hove Bay Autos please visit their website at www.hovebayautos.co.uk



Carats Grand Plans for Extension

It's all change at Carats Café Bar, following two recent successful planning applications.

The café, which is located on Southwick Beach, has already begun the first phase of the refit, which will see a variety of upgrades to the café including increased seating capacity, both inside and outside, new customer toilets inside the café, improved disabled access, as well as the recently completed makeover inside, which features a new-look interior with an integrated sound system and low-energy LED lighting in the ceiling.

Carats' owner Chris Kraszewski said "This will be my twelfth year at the café and it's really important to both me and my staff that we continue to keep things fresh for our loyal customers. We have a really diverse customer base at Carats, including those who work daily around the port area, to surfers, cyclists and our regulars who simply like to enjoy the beach and the view."

The refit should also help Carats continue to play an active role at Southwick Beach. With the pending Joint Area Action Plan for Shoreham Harbour, it is hoped that by working positively with key stakeholders, including Shoreham Port and consulting users of the café and beach, that future additions or enhancements may be possible for the surrounding area too.



Julian Seaman –
Harbour Master/
Director Marine
Operations

Port Proud Sponsors of Sussex Yacht Club

Shoreham Port was delighted to hear the news that five young members of the Sussex Yacht Club achieved great success at the Aberdeen Asset Management Cowes Week. The young sailors, aged 15 to 18 were placed third in the Sonar Class and third in the under 25's Crew across the whole Regatta.



Sussex Yacht Club are major leisure mooring providers at the Port and it is wonderful to see the young members of the club doing so well. The Port provides essential funding to Sussex Yacht Club enabling the club to invest in their facilities and equipment. Recently we made a donation towards the purchase of sailing vessels and safety boats, which has benefited 485 of the club's members.

We would like to wish Sussex Yacht Club the best of luck for the 2013 Aberdeen Asset Management Cowes Week Regatta. We look forward to another year working in unison with the club to encourage new and existing members to fulfil their sailing ambitions.

For more information about how people of all ages can get involved in sailing please visit the Sussex Yacht Club website at www.sussexyachtclub.org.uk

Rare Wildlife Sightings at the Port



The RSPB has reported a sighting of the rare Terek Sandpiper bird at the Port.

The Terek Sandpiper is suspected to be the only bird of its kind in the country. The Port is also home to over 100 Redshank, 50 Ringed Plover, 125 Dunlin, two Ospreys and an increasing number of Teal.

Our resident Mute Swans in Lady 'B' Marina successfully brought up a family of five cygnets this year. Mute Swans mate for life and never migrate abroad.

Port Facts

The 'Higgins' landing craft used on D-Day in World War II and featuring at the beginning of the film 'Saving Private Ryan', were built in Shoreham Harbour