

# Sustainability Scoop

A quarterly catch up on sustainability at Shoreham Port



**Cheyenne Plant**  
Sustainability Manager at  
Shoreham Port

## Hello everyone

Welcome to the Spring installment of Sustainability Scoop! Our newsletter dedicated to all things sustainability within Shoreham Port. Written quarterly by Cheyenne Plant, our Sustainability Manager.

We want this to be a platform to share stories from our Port tenants and users, so please submit sustainability stories to [info@shoreham-port.co.uk](mailto:info@shoreham-port.co.uk).

## In this issue

- The Living Coast Biosphere Reserve
- Butterfly Bank planting
- A message from Cheyenne
- Spotted on the Conservation Corridor

## In bloom:

Thrift plants bloom from April and are a compact evergreen perennial which grows in low clumps and sends up long stems that support globes of bright pink flowers. In some cases, purple, white or red flowers also occur. In Gaelic, thrift is known as 'tonna chladaich', meaning beach wave. In Welsh it is called 'clustog fair', which means Mary's pillow.



Example of Sea Thrift blooming on the coast

## Learn more about Shoreham Port...

Sign up to our other newsletters here



### Property Update

A monthly roundup of vacant units, funding opportunities and local news. Sign up [here](#).



### Port News

Monthly news and updates from Shoreham Port and our local community. Sign up [here](#).

## The Living Coast Biosphere Reserve

In March I took part in my first Living Coast UNESCO World Biosphere Reserve board meeting, which was a great introduction to the many factors that go into keeping the local environment healthy.

A biosphere reserve (or biosphere region) is an area designated by UNESCO to inspire a positive future for people and nature, by considering everything that's needed to make life sustainable. Ours covers an area the size of the Isle of Wight, connecting the South Downs with the Southern Coastline and it protects habitats such as chalk grasslands, dry chalk valleys, floodplain meadows, vegetated shingle beaches, river estuaries and chalk reefs. These provide a home for thousands of species such as the adonis blue butterfly and the shy short-snouted seahorse, the early spider-orchid and the skillful hovering skylark.

I'm excited to continue taking part in supporting The Living Coast in the future and can't wait to see what coastal projects they have in store.



## Butterfly Bank planting due in April

The Shoreham Port Butterfly Bank, kindly funded by Octopus Energy and maintained by the Sussex Dolphin Project, is due to be planted with a variety of native wildflower plugs purchased from the Wildflower Conservation Project in Stanmer. All money raised through plant sales goes towards supporting their work on reintroducing wildflowers to the Sussex landscape.

Species to look out for will include birds foot trefoil, lady's bedstraw, bladder campion and horseshoe vetch. These plants will provide essential habitat for local pollinator species that have been threatened with decline in recent years.



octopus energy



## A message from Cheyenne

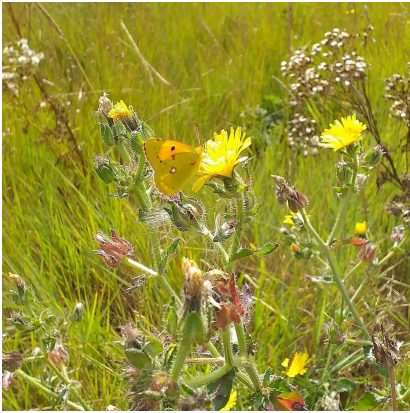


This month's issue of Sustainability Scoop will sadly be my last, as I transition from my position as Sustainability Manager at Shoreham Port to a new opportunity locally. I have absolutely loved writing these newsletters and hearing the fantastic feedback from readers over the last 12 months.

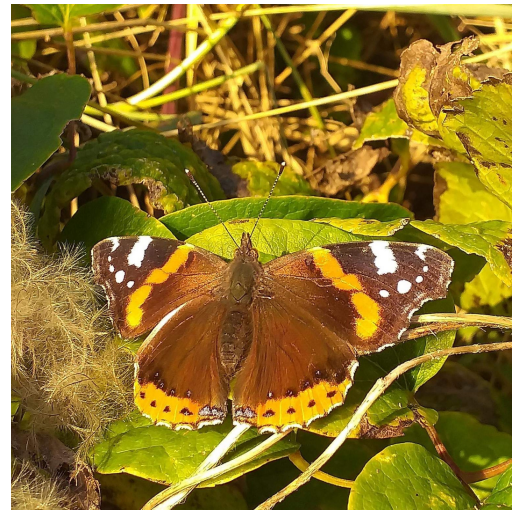
Sustainability Scoop will continue to grow and develop under the supervision of a fantastic new host, who will join us armed with their own plans and ambitions, building on my achievements so far. I look forward to watching the progress!

## Spotted on the Conservation Corridor

Local ecology enthusiasts Neil Coleman and Rezvan Habibi have sent through these remarkable photos of butterflies found in our Conservation Corridor area. Keep an eye out for them this Spring/ Summer and see how many you can spot.



Clouded yellow feeding on late flowering bristly oxtongue



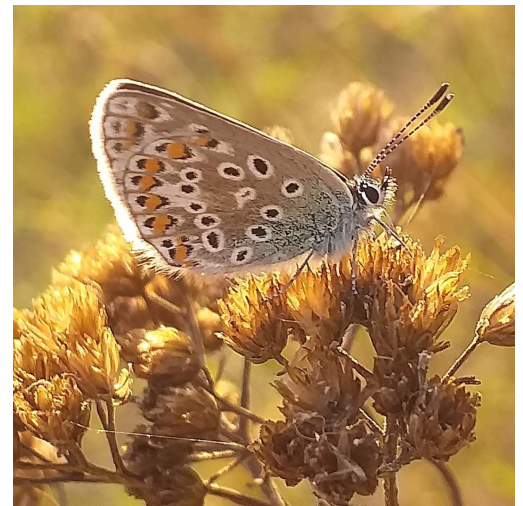
Red admiral



Large white



Painted lady



Common blue



Holly blue (Female)



Common blue

## Tell us about it

Is your business taking steps to be more sustainable? Do you have tips to share with other organisations? Or are you looking for partners for an upcoming project? Tell us about it and we might feature you in one of our future newsletters: [info@shoreham-port.co.uk](mailto:info@shoreham-port.co.uk)

