



shoreham port

# **Sustainability Report**

**A look back at**

# **2021**



# Sustainability Report

## Contents

Page 2	<b>Our Sustainability Mission is Urgent</b>
Page 3	<b>Our Place in the Local Area</b>
Page 4	<b>Our Commitments</b>
Page 5	<b>Climate Action</b>
Page 6	<b>Zero Waste</b>
Page 7	<b>Harmony With Our Natural Environment</b>
Page 8 – 9	<b>Supporting Colleagues and Our Community</b>
Page 10	<b>Valuable Partnerships</b>
Page 11 – 12	<b>Sustainable Business</b>
Page 13	<b>Green Energy Hub</b>

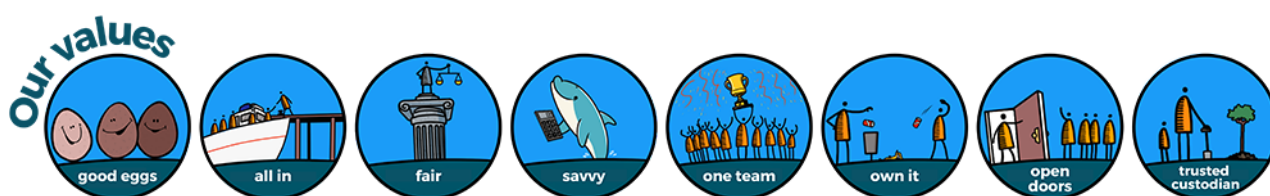




## Our Sustainability Mission is Urgent

Within this report we aim to share our progress and plans with our range of partners, neighbours and stakeholders. During 2021, despite the challenging environment of the continued Covid-19 pandemic, we were pleased to see positive progress in how we engaged our communities, reduced our impact, and moved closer to achieving our sustainability goals. Among the highlights of the year was hosting our first Sustainability Week in September, and plans are already underway for a repeat event in 2022. Looking further forwards, we are delighted to share our plans for a Green Energy Hub at the Port placing us at the forefront of the region's decarbonisation ambitions.

Throughout 2021 we continued to embed our values into all aspects of our activity and last year they were recognised when we won the Best SME People Management Initiative at the CIPD Awards. It is through our value of **Trusted Custodians** that we challenge ourselves to think sustainably and ensure we hand the Port over to future generations better than we found it.



## Masterplan 2022 - Improving our Port for everyone

Our environmental and sustainability objectives are integrated and considered with everything that we do, most notably forming part of our 2022 Masterplan, with points 5, 7, 8 and 10 illustrating our ambitions:

1. We will get everybody home safe and well daily.
2. We will grow our Trust Port by increasing shipping.
3. Our industry leading cargo operation will be centred on the south of the Port.
4. Our estate on the north of the Port will continue to develop as a destination for communities, businesses and tourists.
5. Investment in our infrastructure and Green Energy Hub will continue.
6. Innovation and technology will enhance efficiency, profitability and services.
7. Collaboration will create a community of neighbours, charities, educational partners and local authorities.
8. Our culture will empower and grow colleagues across flexible and modern workspaces.
9. Our diversity will increasingly reflect society.
10. We consider our sustainability mission as urgent and will share our action plans regularly.



## Our Place in the Local Area

Shoreham Port sits at the centre of the newest UNESCO World Biosphere Zone of Brighton and Lewes Downs. Our location links Shoreham Beach (a Local Nature Reserve), the River Adur, the South Downs, Shoreham Fort (a Scheduled Ancient Monument) and the Adur Estuary (a site of Special Scientific Interest). Globally, this is the first newly designated area for nearly 40 years, and this unique location makes our work integral to the success of the Living Coast.



Climate change will have an impact both on the resilience of the Maritime sector and changing patterns of trade. This amplifies the need to protect the marine ecosystem, and we work in line with Maritime UK's goals and with Government to minimise the sector's impact upon the environment, championing collaboration and sharing best practice.

## EcoPorts - accreditation maintained in 2021

We're incredibly proud that in 2021 we successfully reapplied for EcoPort status, an accreditation we have now held since 2013. This places Shoreham Port amongst the most environmentally proactive in the world and recognises our commitment to:

- Raising awareness on environmental protection,
- Sharing knowledge and best practice, and
- Collaborating with other ports to improve environmental management.

We are one of only two ports in the UK to fulfill the necessary environmental management standards to achieve full audited and reviewed status under the Port Environmental Review System (PERS). This is the only port sector specific environmental management standard.





# Our Commitments

Our Sustainability Report focuses on the following six pillars which form the structure of our plans:

## 1 Climate action

Saving energy and producing less carbon.

## 2 Zero waste

Cleaning our water, land, and air.

## 3 Harmony with our natural environment

Helping biodiversity and supporting conservation.

## 4 Supporting colleagues and our community

Keeping people safe, informed, and aware.

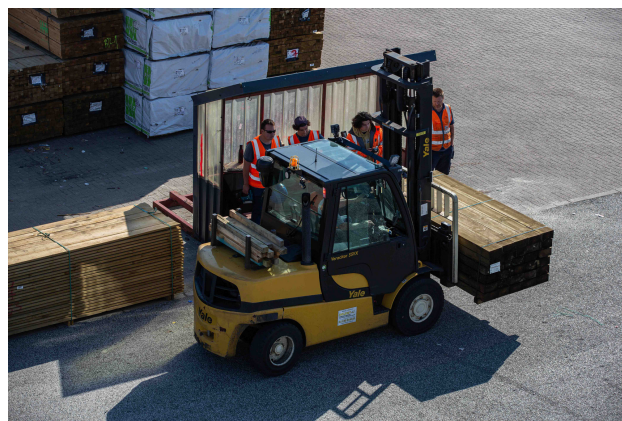
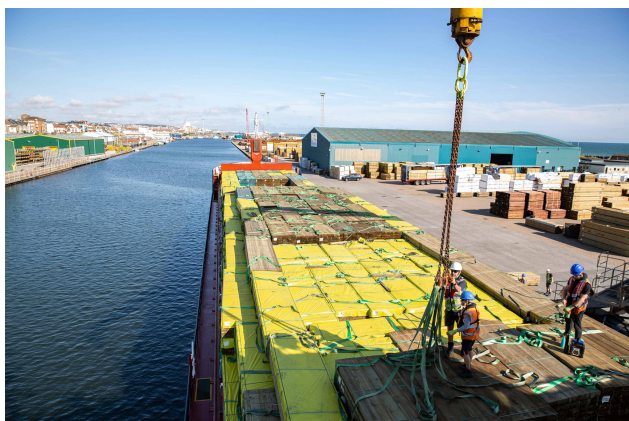
## 5 Valuable partnerships

Working together and sharing values.

## 6 Sustainable business

Taking an efficient, resilient, and responsible approach.

Over the following pages we take a closer look at our achievements throughout 2021 and our ambitions looking forwards.





# 1 Climate Action

## Saving energy and producing less carbon

**We remain committed to working towards achieving net-zero carbon emissions throughout the Port**

As a Port, we are increasingly conscious of our environmental pollutants. Understanding the impact of our work on the environment is something that we are keen to get a clearer picture of, that is why we have formed an early-adopter partnership with AqualisBraemar Loc. Together, we are in the process of creating a port-specific emissions measuring portal to keep track of our emissions footprint.

This portal will help us to monitor the emissions from of our vessels, vehicles and office spaces, as we transition towards cleaner energy alternatives. Progress will be tracked throughout the year and the data will be used to help identify areas for improvement.



*“Sustainability and driving carbon-reducing initiatives in our maritime business is increasingly at the heart of moving forward at ABL Group. Partnering with Shoreham Port, who are aligned with our values, has allowed the development of our emissions tracking tool (emiTr), which allows emissions to be calculated and tracked. The opportunity to pool resources and work through the problem, has resulted in something tangible that can help not only Shoreham Port, but the wider port community to work towards a sustainable future.” Paul Martin, Master Mariner & Director of Maritime*

**Using more renewable energy: We have increased our solar panel peak capacity to 2,427 kWp per year.**

Our strategy is to transition as much of our energy consumption from unrenewable energy sources towards more renewable alternatives on site. Last year, we generated 2,277 MWh of energy across our whole estate, which reduces our reliance on fossil fuels this year and for years to come.

Our two nED 100 wind turbines – Gusty and Spinny – produce 400 MWh of electricity every year. This matches the energy we need to run our canal pump house, which helps us to keep the canal level for our vessels. By generating our own energy using the turbines, we are able to **save 160 tonnes of CO2 every year.**





## 2 Zero Waste

### Cleaning our water, land and air

**Cleaning our canal in partnership with Barrett Steel and Local Fuels, our seabins filter 2.8 tonnes of rubbish from our water every year**

Our two new Sea Bins are working efficiently to help keep the waters of our canal free of rubbish and debris. Positioned strategically, these sea bins filter 25,000 litres of water an hour and **catch nearly 4 kilograms of rubbish every day**. They filter out everything, right down to micro plastics, as small as 2mm across.

Bringing together two of our key commercial tenants, Barrett Steel and Local Fuels, we have been working closely to install and monitor the Seabins as well as raise awareness about the importance of clean water. These two bins have become a popular talking point with our local schools and other groups, helping to raise awareness of the damaging effects of ocean pollution.



**Choosing new technologies for our vessels, heavy equipment, and vehicles has saved us a total of 55.5 tonnes of CO2 emissions compared to 2020**

We have adapted our fleet of more than 60 forklifts, cranes and other heavy machinery from diesel to using gas-to-liquid fuel (GTL), **reducing our emissions by 37.5 tonnes of CO2 per year, engine particulates by up to 90% and nitrogen oxides by up to 25%**. We have also changed the fuel infrastructure for our two tugboats, moving them from diesel to GTL as well, **saving 4.5 tonnes of CO2 a year**.

In 2021, we electrified 2/3 of our fleet; we now have ten Renault Kanagoo 100% electric vans, **saving 7.5 tonnes of CO2** compared to our emissions in 2020.



As current EV technology does not match the operational requirements of the remaining third, the Port opted to replace the oldest vehicles with newer models until a suitable EV alternative is available. This further reduced carbon emissions by 11%, provided safer equipment for Port colleagues and improved operational flexibility.



### 3 Harmony With Our Natural Environment

#### Helping biodiversity and supporting conservation

There is a natural process of shingle movement along the Sussex coast from west to east. The result is the build-up of approximately 15,000m<sup>3</sup> of shingle annually at the east end of Shoreham beach, where the west breakwater blocks its progress at the harbour entrance. This causes the erosion of Southwick beach on the east side of the harbour opening.

In addition to various more permanent sea defence measures, Shoreham Port runs an operation to move this build-up of shingle eastwards twice a year, in the spring and autumn. We also run a similar shingle bypass from Brighton Marina to Southwick beach. Studies have shown that because of shingle bypassing, beach volumes along the Port have stabilised, reducing local rates of erosion. The shingle bypassing operation is supported by the Beachy Head to Selsey Bill Shoreline Management Plan and by the two coastal defence strategies that define the needs for sea defence improvements between the River Adur and Brighton Marina.

**Protecting our coastline: Every year the Port moves approx. 15,000m<sup>3</sup> of shingle**

#### Conserving terrestrial eco-systems, our conservation corridor

Partnering with the Sussex Dolphin Project, we have collaborated towards the protection of a strip of scrub land that lines the north side of the Port. Our newly designated Conservation Corridor is maintained using re-wilding techniques, which will enhance biodiversity capacities and allow natural environmental processes to take place. Our focus is on restoration and increasing connectivity with other local green spaces.

Many rare plants, insects and birds can now use this protected area as an important local habitat. We have also partnered with Octopus Energy to build a chalk Butterfly Bank, replicating the South Downs in miniature to create an otherwise rare habitat. In addition to providing a point of interest for our communities and school groups, our Butterfly Bank connects with the others in the area to conserve pollinating insects like bees and butterflies, and it now forms part of our 'Anchor Points' family trail.

Alongside this, we take a conservation approach to how we plant our estate. This includes reseeded the shingle beach coastline with native coastal shingle plants and installing new planters outside our properties. These planters have been specifically designed to increase the population of rare native Sussex coastal wildflower species, ensuring local wildlife can utilise the area for pollination, habitat and food.



## 4 Supporting Colleagues and Our Community

Keeping people safe, informed and aware

**Raising awareness and educating our people – Sustainability Week welcomed more than 250 sustainability visitors over three days**

The first annual Sustainability Week happened in September 2021 and was a resounding success in terms of public outreach and education. We partnered with the Sussex Dolphin Project and the Global Wind Energy Council to host our friends from Brighton University, the British Ports Association and the Eco Young and Engaged Project to teach about sustainability within their fields of work. We welcomed the public to attend lectures, tours, a volunteer litter pick and join in with competitions that all focused on improving the health of our natural environment. This event will grow and improve year on year as we continue to strive towards building our sustainability initiatives and reducing our impact on the environment.



Sustainability Week is going to be a yearly event at Shoreham Port and we aim to make it bigger and better as we grow and progress through our sustainability goals.

Sustainability Week 2022 is due to take place this September and we're excited to welcome the public back for a jam packed event. You will find our contact details at the end of this report if you would like to get involved.





## 4 Supporting Colleagues and Our Community

### Keeping people safe, informed and aware

Throughout the year, Shoreham Port hosts schools and tour groups for educational trips around our footprint, teaching young people and our local community about the environment and our evolution towards a more sustainable business model. We have a partnership with Shoreham Academy and Sussex University and host sustainability-based work experience placements and internships for these students throughout the year.

We also share our sustainability progress regularly via Sustainability Scoop, our sustainability newsletter, which maintains a great readership from colleagues, tenants and local Port users. Sign up for [Sustainability Scoop](#) to hear our latest news.

Active travel throughout the Port has been encouraged through the establishment of the English Coast Path and pedestrian facilities throughout our beachfront areas. We are currently installing interactive signage to form a walkable trail for visitors where they can learn about our sustainability projects and other key highlights across the Port.



This Anchor Points trail visits Delmar, our recycling dolphin, who lives on Southwick beach and holds recyclable plastic waste inside a life size metal dolphin sculpture.

The trail also visits our Seabins, our Conservation Corridor and other key operational points across the Port, engaging our local community in who we are and what we do.

When it comes to getting to the Port, we work to engage the wider Port community of our colleagues, tenants and visitors in using more sustainable modes of travel. We have installed new bike shelters and 20 smart electric vehicle charging points, with free charging available to all Port colleagues. We have adopted more flexible and remote working practices for many of our colleagues to reduce journeys into the Port, and we have relocated some of our colleagues to ensure that public transport is more easily accessed.

## 5 Valuable Partnerships

### Working together and sharing values

We know that sustainability progress requires collaborative action throughout communities. With that in mind, one of our priorities has been to establish partnerships that create and drive idea sharing and innovation across organisations, sectors, and interest groups.

In 2020 Shoreham Port agreed a strategic partnership with the Sussex Dolphin Project, part of the World Cetacean Alliance (WCA). The WCA is the world's largest marine conservation organisation and the partnership enabled Sussex Dolphin Project to establish their UK headquarters at Shoreham Port. In 2021 this relationship produced conservation-based projects that will continue to protect our important green spaces.

*"Moving to Shoreham Port has been pivotal to the ongoing development of Sussex Dolphin Project. Over the last year, we have been able to make the most of a raft of new opportunities and our larger head office has enabled us to expand our team and move into new areas of research and education. The Conservation Corridor has also provided a vital habitat for many animals while opening access to members of the public to interact with nature." Thea Taylor, Project Lead*



In 2021 Shoreham Port and the Sussex Dolphin Project collaborated with the Sussex Kelp Restoration Project set up by the Sussex Wildlife Trust, with the goal of restoring the important kelp bed habitat of the Sussex coastline, benefiting local sea life. The charity also runs a calendar of activities aimed at creating a future generation of ocean conservationists in Sussex, such as frequent beach cleans and education projects.

Shoreham Port enables, supports and learns from these partners. We'd like to thank all of our sustainability partners who we work collaboratively with to help us deliver a number of projects, these include:





## 6 Sustainable Business

### Taking an efficient, resilient and responsible approach

**Origins Pledge – Our new hospitality development – Port Kitchen, aims for all fresh ingredients to be sourced from within a 25 mile radius of the Port**

Ambitious sustainability goals are at the heart of our new hospitality development Port Kitchen. As with all our projects, we are committed to doing what we can to minimise our impact on the environment and will be balancing this with using the best quality produce we can find, and supporting our local community.

Origins Pledge is a commitment that all Port Kitchen fresh ingredients will be sourced from within a 25-mile radius of the Port, or where possible from tenants within the Port itself.



Our fully compostable cups and food packaging will be supplied by Vegware, and Paper Round will supply on-site bins which they will collect regularly. The waste they collect will break down in under 12 weeks and be turned into compost which is used in agriculture and landscaping, we will even use some of it in our own herb garden.

Herbs for use in the kitchen, and other native coastal species will be planted in raised beds built by our Engineering team using reclaimed timber from around the Port. The species we use will benefit local insects and will be resilient against our harsh weather conditions.

Port Kitchen is due to open in spring 2022 and will be a modern, welcoming space serving coffee and fresh local food and drinks. Visitors will be able to watch Shoreham Port in action and enjoy panoramic views across the lock gates and out over the harbour.



## 6 Sustainable Business

### Taking an efficient, resilient and responsible approach

**Our Sustainable Property Development Template includes renewable energy generation, EV charging and air and water source heat pumps**

2021 saw the replacement of floodlighting at Brighton Terminal and the lock gate areas with drop down masts to reduce light pollution and increase energy and lighting efficiency. This project is continuing in 2022 with further streetlights being replaced, ensuring a **60% energy saving** on the previous lighting.

As we continue to add to and build more for our commercial and operational buildings, we bring to life our Sustainable Property Development Template. Our bespoke template draws together best practice when it comes to thinking about the environmental impact of how we build, use, maintain, and encourage our users to make the most of our buildings.

Our newest developments of Port Kitchen and Riverside Studios, due to be completed in 2022, incorporate Delta Green Environmental Design which makes for a highly sustainable building and includes aspects such as:

- Responsibly sourced construction materials
- High performance thermal insulation
- Low water consumption fittings
- Green electricity
- Air source heat pump heating and cooling system
- LED lighting
- Native wildflowers in planters
- Electric vehicle charging points
- Solar panels
- Cycle parking facilities



*"As a sustainable business, we are proud to be based at Shoreham Port because of our shared environmental ethos and dedication to having a positive impact on the environment. It is important to us that every aspect of our business is as sustainable as possible, so Shoreham Port is the perfect place to base ourselves." Emily Turner, Digital Marketing*

**bcti**



## Green Energy Hub

### Decarbonising the region

**The Green Energy hub at Shoreham Port will drive sustainable fuel consumption throughout the Southeast of England.**

Green hydrogen will play a significant role in delivering decarbonisation and there is an emerging market for clean fuel which we will be at the forefront of. Heavy fleets are set to shift towards hydrogen, especially HGVs and refuse vehicles, as well as some public transport. We are in a unique position to produce renewables in an urban setting, creating jobs for local people, as well as offering environmental benefits and sustainability. The Port's ambitions are strongly aligned with the Government's hydrogen strategy and green job creation initiatives.

The first phase of the Hub will focus on the provision of green hydrogen and renewable electricity to our own fleet of forklift trucks and heavy goods vehicles. 500 HGVs enter or leave the Port each day and the long-term ambition is to scale up production to power these vehicles as well, reducing emissions and noise. Decarbonisation of the HGVs and forklift trucks entering and using the Port has the potential to save around **45,000 tonnes of CO2 each year**.

These ambitious plans bring together a group of strategic partners, consisting of:

- H2 Green, who specialise in establishing green hydrogen networks and fuel production,
- Ricardo, who are imparting their world-leading engineering experience and pioneering leadership in hydrogen conversions, and
- Local Fuels, who are bringing their fuelling infrastructure and distribution expertise to the project.

Combining renewable onshore wind and solar power generation to produce the hydrogen on site, the Green Energy hub at Shoreham Port will drive sustainable fuel consumption throughout the Southeast of England.

Find out more about these plans and the future stages of the project [here](#).





## **Contact us:**

[info@shoreham-port.co.uk](mailto:info@shoreham-port.co.uk)  
[www.shoreham-port.co.uk](http://www.shoreham-port.co.uk)



Details of our annual Public Meeting and Sustainability  
Week 2022 will be published on our website.