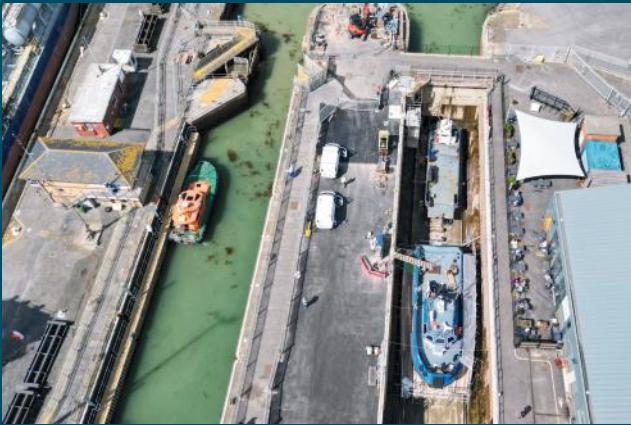




Shoreham Port Authority

Tariff Book



Effective 1st January 2024

Shoreham Port Authority

Nautilus House
90 – 100 Albion Street
Southwick
Brighton BN42 4ED
Sussex

Telephone: +44 (0) 1273 598100

Fax: + 44 (0) 1273 592492

E-mail: info@shoreham-port.co.uk

Website: www.shoreham-port.co.uk

Harbour Radio

Telephone: +44 (0) 1273 592366

Fax: +44 (0) 1273 595988

Senior Leadership Team

Chief Executive

Finance Director & Deputy Chief Executive

Commercial & Property Director

Harbour Master & Director of Marine Operations

Director of Engineering & IT

Safety, Operations & Logistics Director

Tom Willis

Sara Bassett

Beth Evans-Gay

Julian Seaman

Brian Rousell

Nicky Brown

Contents

This Tariff Book sets out the basis on which Shoreham Port Authority will provide its facilities and related services. It also sets out various procedures to be followed and important provisions relating to the liability of port users.

By using the Port's facilities and/or services you agree to the provisions of this Tariff Book, including the charges and the terms and conditions set out within it. Please contact Nautilus House for a paper copy of this Tariff Book or alternatively it is available for download from the Port's website at: www.shoreham-port.co.uk/what-we-do/marine/key-marine-documents

	Pages
Statutory Basis for Charges	1
List of Wharves	2
Cargo Dues	3
Goods in Transit	4
Commercial Vessel Dues	5-7
Pilotage Charges	8-9
Marine Services Charges	10
Engineering Services Charges	11
Hufflers' Tariff	12
Recreational Vessel Charges (and Commercial Vessels not assessed to GT)	13
Parking Rates	14
Terms and Conditions	15-18

Statutory Basis For Charges

The Authority To Raise Charges

The authority to charge ‘ship, passenger and goods dues’ as considered ‘fit’ is vested in the Board of Shoreham Port Authority by the Harbours Act 1964 section 26(2). This power is subject to a right of objection to the Secretary of State for Transport under section 31 of that same Act.

The Power To Collect Charges Raised

By virtue of the Harbours Docks and Piers Act 1847 section 44, the Shoreham Port Authority may recover rates payable to them in respect of a ship by distraint and sale of the ship and its tackle. Under section 45 of the same Act the Authority is empowered to recover rates due to them in respect of any goods by distraint and sale either of those goods or any other goods held on harbour premises belonging to the person/s liable for payment of the dues.

Pilotage Charges

Pursuant to Section 10 of the Pilotage Act 1987 the Shoreham Port Authority as Competent Harbour Authority (CHA) for pilotage in the Port of Shoreham hereby makes the following list of pilotage charges and conditions of use of the pilotage service to take effect from the date above and replacing those previously applied.

The Shoreham Port Authority reserves the right to plan the sequence of pilotage/non-pilotage moves as directed by the Harbour Master, taking into account the size of ships, tidal circumstances and the availability of Pilots.

List of Wharves

	Canal	Eastern Arm	Western Arm
Port Authority Wharves	Brighton Terminal Brighton Terminal (Bulk) Brighton Terminal (Rombus) Brighton Terminal (Silos) Britannia Wharf Ferry Wharf Fishersgate Terminal Inner Layby Terminal Inner Layby Terminal (Slant) Power Station Wharf RNR Wharf Shoreham Oil Terminal Wigan Wharf	Outer Layby Terminal	
Private Wharves	Aldrington Basin East Quay Aldrington Basin North Quay Aldrington Basin South Quay ARC Terminal Baltic Wharf Hall's Aggregate Wharf Hall's Layby Wharf	Albion Wharf Penney's Wharf Turberville Wharf	Egypt Wharf Fisherman's Wharf Lennard's Wharf New Wharf

Cargo Dues (Goods)

Rates on articles and goods landed or shipped within the Port (see Terms and Conditions 1-4 on page 15)

Cargo Dues Category	Principle Commodity Description	Rate £ per tonne
1.	Sand and shingle	0.26
2.	Quarried stone, lytag, pumice, slag, marble chips, cement and mineral products other than Category 12	0.38
3.	Ferrous scrap	0.38
4.	Woodpulp	0.55
5.	Fertilisers and peat	0.57
6.	Cereals and animal feed	0.68
7.	Softwood and hardwood timber and logs	0.68
8.	Recyclables	0.68
9.	Fuel oil, mineral oils and bitumen	0.79
10.	Coal and other mineral fuels	0.83
11.	Iron and steel, non-ferrous scrap, paper and board materials and inorganic chemicals	1.03
12.	Pulp (paper)	0.78
13.	General cargo imports and exports	1.49

14.	<p>Fish, shellfish and other sea-caught foodstuffs, depending on size of vessel used:</p> <ul style="list-style-type: none"> - Vessels of 6 to 15 metres - Vessels in excess of 15 metres 	<p>% of market value of catch</p> <p>1.0%</p> <p>2.0%</p>
-----	---	---

Transit Rental

Goods in Transit/Responsibility of Goods

When space is available, goods may be stored on Shoreham Port's wharves, or within transit sheds, for a period at the discretion of the Chief Executive depending on traffic requirements.

Rent on the use of transit facilities/wharves are charged according to current market rates and availability and will be quoted on application.

Ordinarily goods will not be allowed to remain in port for more than three months. After this period of time, new terms and conditions will be applied depending on type and quantity of cargo/goods.

Shoreham Port does not accept any responsibility for any loss or damage, however caused, to any goods placed on its wharves or within its transit sheds.



Commercial Vessels

(Port Dues/Ships Dues) (See Terms and Conditions 5-6 on pages 15-18)

- (a) **On entry to the Port, on shifting between berths within the Port and on remaining within the Port for more than seven days.** Rates are charged per ton/gross tonnage and apply to all commercial vessels, as defined in the terms and conditions. Rates increase when vessels shift between berths or remain within the Port for more than seven days and port users should refer to the table below.

1. Rates Charged on Entry	Berthing at a Port Authority Wharf £	Berthing at a Private Wharf £
Western and Eastern Arms	0.74	0.66
The Canal	0.92	0.82
2. Rates Charged on shifting between berths	Shifting to a Port Authority Wharf	Shifting to a Private Wharf
From a private wharf with- in the Canal	0.23	No charge
From a private wharf to or from the Canal	0.41	0.33
From a Port Authority Wharf within the Canal	No charge	No charge
From a Port Authority Wharf to or from the Canal	0.33	0.33
3. Rates Charged on shifting berths and remaining within the Port for more than seven days	Remaining at a Port Authority Wharf	Remaining at a Private Wharf
	A daily rate based on the entry rate, plus £2.71 per metre of vessel length per day.	A daily rate based on 50% of the entry rate.

Commercial Vessel Dues

(Port Dues/Ships Dues continued)

(b) Vessels requesting a Port Authority berth for purposes other than working cargo (Quay charges) Subject to availability, a vessel berthing alongside a Port Authority wharf will be liable to pay a mooring rate of £2.71 per metre of vessel length from the day of first entering the Port, in addition to the commercial vessel dues rate detailed in Section 1 of the table on page 5. Where such vessels remain in the Port for more than seven days, the entry charge and mooring charge will become payable in addition on a daily rate.

(c) Fishing Vessels

- Cargo Dues – see page 3 Category 13
- Fishing Vessel Dues – see page 5 Section 1, Rates Charged on Entry: The Canal
- Berthing Fees – see page 6 (b)

(d) Port Waste Reception Facilities Regulations 2003

In respect of commercial vessels laying alongside at Shoreham Port terminals/wharves a mandatory environmental charge on entry of £90 per vessel will be levied for providing and administering port waste reception facilities for the vessels staying up to seven days.

The environment charge is regularly reviewed to take account of the actual costs for the provision of waste reception facilities and their management, including the administration cost involved.

(e) Security

International Ship and Port Facility Security (ISPS) vessels visiting Shoreham Port owned and operated terminals will be subject to an ISPS security charge of £75 per visit. The charge will not apply to vessels less than 500 Gross Tonnage or Naval Ships.

Commercial Vessel Dues

(Port Dues/Ships Dues continued)

(f) Waste Disposal Oil

For the disposal of Waste Oil charged at £0.93 per litre.

(g) Contaminated Waste Disposal

For the disposal of Contaminated Waste charged at £235 per 205 litres drum or part thereof.

(h) Dry Waste Disposal

For the disposal of dry waste associated with the discharge of cargo or works being carried out by a vessel alongside a charge of £39 for the vessels staying up to seven days.

(i) Harbour Works Licences

Under the Shoreham Harbour Act 1978, Shoreham Harbour Authority may grant a Harbour Works Licence, upon payment, to construct, alter, renew, or extend works within the Port below the high water mark of ordinary spring tides or up to 50 metres landwards of such high water mark.

Dredging may be granted by the Authority under the Works Licence, upon payment, to dredge material from the bed and foreshore of the Port.

A Marine Management Organisation licence may also be required for the works or dredge to take place.

	Project/Work Scope Charges		
	Within 24hrs	Less than 7 days	More than 7 days
Diver Permit	£210.00	£265.00	£400.00
Works Licence	£37.00	£100.00	£210.00

Pilotage Charges

All charges are per Gross Tonnage assessed in accordance with an International Tonnage Certificate.

Pilotage in the Port is compulsory with certain exemptions, subject to the provisions of a Pilotage Direction issued on 1st January 2022.

The following pilotage charges are applicable only to acts of pilotage carried out between 4 hours before the high water of any tide and 3 hours after the high water. Acts of pilotage carried out outside these hours may be subject to an additional charge. The Chief Executive will exercise discretion in determining these additional charges.

	Per GT £
Pilotage payable on entry and on departure (Minimum Charge £184)	0.29
Pilotage payable on shifting between berths	0.14
Pilotage payable on entry and on departure by vessels piloted by Masters or First Mates holding a valid Pilotage Exemption Certificate	0.14
For use of Pilot Boat for holding, pushing or moving a vessel	0.14
Attendance and Detention Charges	
If on attending a vessel at its berth by request a Pilot's services are not required	0.14
If after attending a vessel at its berth by request a Pilot is required to stand by because the vessel is not ready to proceed a detention charge shall be payable	0.14
If after a booking has been made for a Pilot the booking is cancelled within 90 minutes of the booked time the Authority reserves the right to withdraw a Pilot after 30 minutes' detention and to seek a re-booking	0.10

Pilotage Charges

(Continued)

Pilotage Exemption Certificates – Scale of Charges

With reference to the Shoreham Port Authority Pilotage Exemption Certificate Rules, dated December 2013, the Scale of Charges is as follows:

	£
(1) For Masters and First Mates of vessels applying for a Pilotage Exemption Certificate.	274.00
(2) For Masters and First Mates of vessels applying for annual renewal of a Pilotage Exemption Certificate.	161.00
(3) Administration fee for amending a Pilotage Exemption Certificate	53.00

For the guidance of all vessels requiring the service of a Pilot the following procedure should be adopted:

Boarding point: Pilots board incoming ships up to two miles off the Harbour Entrance four hours before High Water until the tidal conditions after High Water makes the entrance of vessels unsafe.

ETAs and Amendments: ETAs should be sent 12 hours before arrival through any United Kingdom Coast Station or local agents with amendments at two hours' notice through Shoreham Harbour Radio on Channel 14 (VHF). ETAs should include the vessel's maximum draft.

ETAs may be sent to Shoreham Harbour Radio at the Locks, Southwick, Brighton:

By telephone +44 (0) 1273 592366
or e-mail SRadio@shoreham-port.co.uk.

Contact procedure: Shoreham Harbour Radio maintains a listening watch on Channel 14 throughout 24 hours. The pilot boat also maintains a listening watch on Channel 14 (VHF) during tidal hours.

Working frequencies: Having made initial contact on Channel 14, ships should communicate on working frequencies – Channels 6, 9, 11 & 14.

VHF and telephone conversations are all recorded and can be used in any investigation into incidents in the harbour.

Marine Services

Terms of Service Provision	Monday to Friday 0800-1700 hrs (excluding Bank holidays) £	All Other (hours not specified) £	Cancellation £
Towage Charges Payment per hour or part thereof. Minimum period 4 hours	215.00	284.00	351.00
Workboats Payment per hour or part thereof. Inclusive of launchman. Subject to availability	178.00	251.00	
Pilot Cutter Services Payment per hour or part thereof. Subject to availability and with the Harbour Master's agreement. Minimum period 4 hours when outside of the commercial tide.	215.00	215.00	
Watering Vessels Water Supply per m ³ Inclusive of connection fee. Minimum charge of 5m ³	15.84 79.20	22.89 114.45	
Bed Levelling Payment per hour or part thereof. Minimum period 4 hours. Disposal of soils per cubic metre or part thereof.	542.00 14.79	816.00 14.79	
Hydrographic Payment per hour or part thereof. Subject to availability.	251.00		

Engineering Services

Dive Team Charges

£308.00 per hour, subject to a minimum of 4 hours.

Dry Dock Charges

Dry Dock	
First 24 hours	£70.00 per metre length, subject to a minimum charge of £1,400.00
Each subsequent period of 24 hours or part thereof	£25.00 per metre length, subject to a minimum charge of £500.00
Water Supply per Cubic Metre	£15.84
Electricity Supply per Unit	Subject to change due to utility pricing


Wet Dock	
Preparing Site & Workshop Access	£750.00
Daily Rate - Vessel Dues	2.54 per meter of vessel length
Harbour Dues	£0.86 per vessel Gross Tonnage
Water Supply per Cubic Metre	£15.84
Electricity Supply per Unit	Subject to change due to utility pricing
Forklift Rental plus driver	Subject to change due to fuel pricing and day/time of hire.

The charges above to include docking and undocking during normal working hours (Monday to Friday 0800-1700 hrs) with the dockside labour attached thereto, pumping, the use of shores and workshop.

An additional charge will be levied to cover the costs of any necessary preparation works for the docking, and for any overtime worked during the docking or undocking operation. To be agreed in advance prior to incurring.

The Port requires a 20% deposit to confirm booking along with full payment to be made prior to departure.

Hufflers' Tariff

	Charges GT						
	0- 599 £	600- 1,199 £	1,200- 1,799 £	1,800- 2,399 £	2,400- 2,999 £	3,000- 3,999 £	4,000 & over £
Payable both upon entry and departure	144.09	162.10	180.30	203.21	221.08	239.69	262.14
From one berth to another, including a vessel which passes out of the Port entrance to effect such a move							
1) Vessel passing through Locks	108.09	121.56	135.22	152.39	165.78	179.81	196.63
2) Vessel not passing through Locks	72.05	81.02	90.14	101.60	110.54	119.85	131.11
Temporary moorings to a wharf other than one at which a vessel discharges or loads, to assist such vessel in swinging	36.02	40.49	45.07	50.79	55.25	59.92	65.55
Attending a vessel when ordered to do so by or on behalf of the Master to do so and services are not utilised within 15 minutes	43.21	48.60	53.94	57.87	66.27	71.91	78.63

Recreational Vessels

(And Commercial Vessels not assessed to GT)

Western and Eastern Arm Harbour Dues			
Vessel Length in Metres	Annual	Monthly	Daily
Up to 6.00	£53.00	£8.00	£10.00
6.01 to 7.00	£73.00	£11.00	£10.00
7.01 to 8.00	£91.00	£13.00	£10.00
8.01 to 9.00	£108.00	£16.00	£10.00
9.01 to 10.00	£121.00	£18.00	£10.00
10.00 and above	£142.00	£21.00	£10.00
Personal Water Craft	£92.00	£15.00	

Canal Harbour Dues	Annual
Annual	£488.00
Monthly	£48.00
Western Arm Mooring Fees	Annual
Silver Sands and Mud Flat C Lower	£560.00
Silver Sands and Mud Flat C Upper	£392.00
Canal Mooring Fees	
Port Authority Marina's per metre per annum	£315.00

Visiting Vessels	
Lady Bee Marina Harbour Dues & Mooring Fees	Up to 7 days
Up to 15.0m per metre, per day	£4.40
Up to 15.0m per metre, per summer month	£40.00
Up to 15.0m per metre, per winter month	£31.00
Per Lock in and out; visiting Sussex Yacht Club, Riverside Yard or Lady Bee	£30.00
Lady Bee Marina Slipway Per Lock in and out	£53.00

Harbour Dues are non-refundable after 30th June.

For vessels entering the Harbour on or before 30th June the Annual Tariff shall apply; thereafter the Monthly Tariff shall apply.

For visiting vessels staying beyond 14 nights in the Canal the Monthly Harbour Dues Tariff shall apply.

Summer is from 1st April to 30th Sept. Winter is from 01st Oct to 31st March.

1. Please see terms and conditions 7,8,9 & 10
2. All outstanding debts as at 30th June will be passed on to our debt collection agency for legal proceedings to commence to recover monies owed.

Parking Rates

Car Parking Rates

Shoreham Parking 2024	0 to 2hrs	2 to 4 hrs	4 to 6 hrs	6 to 8 hrs
Nautilus House	£2.50	£5.00	£7.50	£10.00
Basin Road South	£2.50	£5.00	£7.50	£10.00
Basin Road South, Gate 7	£2.50	£5.00	£7.50	£10.00
Lady Bee Marina	£2.50	£5.00	£7.50	£10.00
Port Kitchen	£2.50	£5.00	£7.50	£10.00

Brighton Parking 2024	0 to 2hrs	2 to 4 hrs	4 to 6 hrs	6 to 8 hrs
Hove Enterprise Centre	£3.00	£6.00	£9.00	£12.00
Quayside	£3.00	£6.00	£9.00	£12.00
Aldrington Marina	£3.00	£6.00	£9.00	£12.00
Basin Road South, The Cheese Man	£3.00	£6.00	£9.00	£12.00

HGV Parking Rates

Availability: Monday—Sunday (including bank holidays)

	Overnight
2024 charges	£17.50

All above rates are subject to a 10p transaction charge

Terms and Conditions

Payment Terms

Vessel dues	Payment due within 30 days of the date of invoice
Pilotage	Payment due within 30 days of the date of invoice
Cargo dues	Payment due within 30 days of the date of invoice
Dry Dock	Immediate payment due in full prior to departure
Leisure	Payment due within 30 days of the date of invoice
All other charges	Payment due within 30 days of invoice unless otherwise indicated

- (a) The Port's standard payment terms are 30 days from date on invoice.
- (b) Late payment interest charges of 3% above Bank of England base rate may be payable on any sum outstanding and interest will be accrued on a daily basis until payment is received.

Cargo Dues (Goods) - Rates on Articles and Goods Landed or Shipped within the Port

- (1) The Chief Executive will exercise discretion in determining whether articles and goods not specified in this list fall into the General category 12. Unlisted cargoes not falling into the general category 12 will have rates determined at the discretion of and on application to the Chief Executive.
- (2) In charging the rates on goods, the gross weight or measurement of goods shall be taken. Fractional parts of any weight, measure, number or value shall be charged according to the nearest whole number.
- (3) A Cargo Declaration Form must be completed by the ship's agent or the consignee of the cargo or agent thereof and submitted to the Port Authority no later than 24 hours after completion of discharge and/or loading.
- (4) Declarations of catch values for fish, shellfish and other seacaught foodstuffs should be accompanied by a landing certificate clearly detailing the market value.

Commercial Vessel Dues (Port Dues/Ships Dues)

- (5) A 'commercial' vessel, for the purposes of applying the above rates and charges, is defined as a vessel assessed as to gross tonnage (i.e. vessel having an International Tonnage Certificate).

Terms and Conditions

(Continued)

(6) Dues on segregated ballast tankers for which International Tonnage Certificates (1969) are submitted will be charged on the basis of total gross tonnage less the total tonnage of tanks exclusively used for the carriage of segregated water ballast, subject to the Tonnage Certificates showing that the segregated ballast tanks comply with Regulation 13 of Annex 1 of the International Convention for the Prevention of Pollution from Ships 1973, as modified by the Protocol of 1978 relating thereto.

Recreational Vessels

(7) All the above dues become payable on demand for visitors and 30 days from date of demand in all other cases.

(8) All vessels shall display on the **exterior port side of the hull** the adhesive dues receipt. Vessels for which dues have not been paid in accordance with the tariff will not be permitted through the Locks.

(9) The above rates include Value Added Tax at the standard rate at the date hereof for all recreational craft (defined as all yachts and motorised boats not gainfully employed, full-time, in commerce or fishing and all vessels deemed by the Chief Executive at his sole discretion to be recreational craft). The Port Authority reserves the right to increase dues charged in respect of recreational vessels for all subsequent increases in the rate of Value Added Tax.

(10) An administration fee of £65.00 will be charged for costs incurred in relation to the detention of vessels and late payments. In addition, £50.00 will be charged per letter sent and per attendance of the vessel following detention.

Hire of Port Authority Tug

(11) Hire of the Port Authority tug is at all times subject to availability of the tug and crew and to the UK Standard Conditions for Towage and Other Services 1983.

Port Authority Wharves – Definition

(12) Owned by Shoreham Port Authority.

Private Wharves – Definition

(13) Owned privately or leased from Shoreham Port Authority but tenant has responsibility for maintenance of the wharf.

Terms and Conditions

(Continued)

Vessel and Cargo Dues

(14) These are dues levied by Shoreham Port Authority for the up keep and maintenance of the Port for the benefit of its Stakeholders. This includes dredging, infrastructure maintenance and services associated with the safe navigation of ships within the Port.

Passenger Fee

(15) A fee of £6.00 is chargeable per passenger on all visiting Cruise Liners in addition to all other relevant vessel Port charges.

General

(16) Failure to pay the required dues on time, the Port reserves the right to refuse entry or prevent from sailing, of any or all vessels associated with the Operator/Owner/Manager.

Liability & Indemnity – IMPORTANT please read this clause carefully

Users of the Port's facilities and/or services shall be responsible for and shall indemnify and hold harmless the Port against all and any liabilities, cost, claims and expenses of whatsoever nature that the Port may incur/sustain arising (directly or indirectly) out of any breach of any provision of the terms of this Tariff Book.

The Port will not be liable, whether in contract, tort (including negligence), breach of statutory duty or otherwise for:

- (A) any indirect or consequential loss;
- (B) any loss of profit, business, anticipated savings, use or other similar loss;
- (C) any other loss in an amount exceeding the amounts paid or payable by the User to the Port in respect of the facilities/services in relation to which such liability has arisen; in each case whether or not the Port has been advised of the possibility of such loss.

Any claim against the Port must be issued within one year of the date on which the User became aware or ought reasonably to have become aware of the events or circumstances giving rise to such claim, otherwise all claims are barred.

Terms and Conditions

(Continued)

Insurance

It is the User's responsibility to ensure that all vessels and/goods are insured adequately against loss or damage at all times.

Force Majeure

The Port shall not be liable for any delay loss or damage if the Port is hindered or prevented from or delayed in carrying out any services or providing access to any of its facilities by reason of any event beyond its reasonable control (including, but not only):

- (A) Act of God;
- (B) Any consequences of war, invasion, act of foreign enemy, hostilities (whether war or not), terrorism, civil war, rebellion, insurrection, military or usurped power, fire, accident, or similar cause whatsoever, or confiscation, requisition or destruction of or damage to property by or under the order of any government or public or local authority;
- (C) Seizure or forfeiture of Vessels and any goods under legal process or otherwise
- (D) Riot, civil commotion, strike, lockout, general stoppage or restraint of labour from whatever cause;

Mooring Service

By virtue of entering Shoreham Port, the commercial vessel in question acknowledges and affirms the utilisation of the designated Huffer/Mooring Service and relevant Tariff charge applicable, as appointed by their nominated agents.