



PORTlife



Inside this Issue

New Business Streams . Latest Port Investments . Harbour Regeneration to Create Jobs and Homes
New Tenants . Brighton Marathon . Meet our People . Stories around the Port . 2011 Diary Dates

Welcome to PORTlife 3



Welcome to the PORTlife number 3, the first edition in 2011. Over the last year we have been working hard to raise the Port's profile, and whilst PORTlife has played a big part in improving our communication channels, we continue to update our website weekly and look for new ways to reach our stakeholders. Another channel that has been introduced

is the public information boards on either side of the lock gates. The information boards are being utilised to communicate current information to the public and to keep everyone up to date on activities around the Port, especially when waiting to cross the locks.

The Port had a good year in 2010 with income and cargo tonnage up 6-7% over the prior year. All staff worked really hard, not only serving existing customers well, but also securing new business into the Port.

The Masterplan was finalised in the last quarter and sent off to the DfT, and this had been very well received by local authorities and key tenants, giving them the confidence to further invest in the Port. Building work for Parker Steel

continues and the foundations are almost complete, and the newly paved Rombus terminal is now full of cargo from timber to salt to aggregate.

The New Year has got off to an excellent start with new business opportunities secured with Swedish shipping line Ahlmark Lines AB, who have appointed Shoreham as their Southern Terminal operator; Arcelor Mittal, who are expected to ship in about 20,000 tonnes per year of steel piling; and Stobarts who will be exporting biomass (woodchips) to Northern Europe and the Baltics. In order to accommodate this increase in business we will be investing in new equipment, and hiring extra staff.

As a Trust Port, we are committed to re-investing our surpluses

to develop a modern, viable and vibrant Port that creates many local job opportunities. As the Port is at the heart of the community, we have supported numerous local events throughout the year, either through a representative attending, presenting information or through direct funding. We aim to sustain this engagement with our local community and our other stakeholders and have many exciting events planned over the next few months – keep an eye on our website and information boards for more news on this.

As ever we would welcome feedback and contributions to future articles related to the Port. Please send us ideas by post or through the contact form on our website www.shoreham-port.co.uk

Rodney Lunn – Chief Executive

New Business Streams into the Port

Since our last newsletter everyone has been busy throughout the Port ensuring service levels are maintained and improved where they can be for existing Port users. We have also been working on new business streams and, thanks to all

staff throughout the Port, new business opportunities have been secured for 2011 and onwards – biomass exports (woodchip) through Stobart Biomass of which the first shipments were over the Christmas period; Arcelor Mittal steel sheet piles, the first shipment was during January;

and Ahlmark lines shipping timber packages, the first shipment at the end of February. Both of the latter have moved their operations from other south eastern Ports to Shoreham. Ahlmark Lines will be shipping timber



from Sweden's Lake Vanern Kristinehamn and the north east coast Ports of Skelleftehamn and Iggesund on a monthly basis. There will also be three separate services from Finland and two from Riga in Latvia, as well as the odd spot cargo. Thanks go out to all of our staff for a well-run clean port with a polite and

efficient workforce when dealing with our customers.

Alan Motterham
- Commercial/
Operations
Director



Harbouring Plans for New Employment and Homes

Plans for a major development in the Shoreham Harbour area that will provide significant new employment and housing are being drawn up by Brighton & Hove City, Adur District and West Sussex County Councils together with Shoreham Port. They have been working in partnership over the past year to create a new shared vision for the area and a realistic development plan.

A recent study into the capacity of the area for new development has established that over 2,400 new jobs and up to 2,000 new homes could be provided over the next 15 to 20 years. The main areas for development are likely to be the Western Arm (the north side of the river from Shoreham town centre to Kingston Beach), South Portslade and at Aldrington Basin in Hove.

Shoreham Port has recently published its own Masterplan setting out the future for the Port and highlighting the potential for further growth, including 500 new



port-related jobs and significant investment in new port facilities over the next few years (see our website www.shoreham-port.co.uk).

Peter Davies, Development Director at Shoreham Port said, "We very much welcome the greater

emphasis on employment and are pleased the Port is at the heart of the new vision. It fits well with our own ambitions for the Port and we fully support the revised scale of development that's now proposed. We want to work in partnership with the three local authorities, businesses and the community to

turn this vision into a reality". Full details of our Masterplan can be found on our website.

Peter Davies
- Development
Director



New Crime Story Hits the Shelves

Peter James book launch

The internationally renowned, best-selling author Peter James is to launch his next Roy Grace novel 'Dead Man's Grip' at Shoreham Port. The prestigious ceremony for 500 guests will take place on our Inner Layby Terminal and the Port is working closely with Peter and his publisher, Macmillan, to create a setting in tune with both the macabre plot of the book and the glittering

razzmatazz of the launch. Dead Man's Grip will be the seventh in the series of astonishingly gripping yet highly believable yarns based around the life and work of Brighton born-and-bred copper, Detective Superintendent Roy Grace. During the ceremony, one of our giant quayside cranes will work with our Engineering Dive Team to recover a mysterious white van from the

murky depths of the dock. Is there a body inside???

You can read more on the novels of Peter James and his love of our city and Port on his website at www.peterjames.com

Another Moving Investment

Over the past few months our Board have given approval and orders have been placed for new equipment to handle the new business streams including a large 10 cubic meter grab for our cranes to handle biomass wood chip, a new Sennebogen mobile crane for handling steel and all other products and we are also about to purchase new front loaders for handling all types of bulk materials.

Shoreham Port Rocks!

In 2010 Shoreham Port imported over 34,000 tonnes of rock salt for mining and distribution company Cleveland Potash Ltd.

We discharged 15,000 tonnes from Middlesbrough and 19,000 tonnes from Tarragona in Spain onto our new extension to Brighton Terminal, known as Brighton Terminal Rombus Wharf.

The majority of salt was for local East and West Sussex County Councils to help keep our roads clear during winter weather conditions, but deliveries extended as far as Warminster in the West, Hastings in the East, and as far North as Croydon in South London.



Port Bags a New Tenant

Shoreham Port has a new tenant - Day Aggregates. They are opening a new aggregates plant on Kingston Railway Wharf in Brighton Road, Shoreham (next to Stamco). They will be sorting and bagging aggregate for local customers

using dredged material landed in Shoreham at one of the other existing mineral wharfs. There could be as much as an extra 50,000 tonnes coming through the Port as a result. Ten new jobs are expected. Planning permission was granted back in October and they have spent the last three months building new offices, the bagging station and stockholding areas. The site had been empty for several years so this is good news for the area and the Port.

James Day, MD of Day Group Ltd, says: "We are delighted to be opening a new aggregate bagging operation at Shoreham. This modern facility will enable us to provide a first class service to our customers, increase the volume of aggregates handled by the Port and minimise the lorry miles and hence the carbon footprint associated with our deliveries."



A Day in the Life of Lorraine Halliday



Lorraine is an Accounts Administrator where she is responsible for the day to day Sales Invoicing for the Operations Division of Shoreham Port. This involves collating and analysing data regarding the discharge of vessels, haulage deliveries or any other additional

charges before invoicing the appropriate customers.

Lorraine joined the Port 11 years ago in January 2000 as an Administrator in Transport. A few years later she moved into Shipping, and then into Accounts, although she still continues to cover colleagues during holidays in this busy office. Lorraine has a good all round knowledge of the day to day running within the Operations Division.

Lorraine commented "I love the banter from colleagues in the office and see them as an extended family as we have all worked together for years!"

Lorraine represents colleagues on the Work's Council, she is the representative for Health and Safety and is also on the committee of the Employees Sports and Social club.

Lorraine recently passed Level 2 AAT Certificate for Accounting Technicians. She said "having to wait weeks for the results was one of the worst times in my

career but also the most thrilling when I received the news."

Outside work Lorraine loves home life, gardening, reading, spending time with the grandchildren - she has 5 grandsons and recently the new addition of a granddaughter. She also has 4 chickens which are thoroughly spoilt!

Lorraine is a creative person. She has a large dolls house which she is restoring to its Georgian period and is an avid collector of 1/12 miniatures.

Changing Faces of the Port

Trevor Linscer has recently retired after 47 years of service working at Shoreham Port. After leaving school Trevor completed a three year engineering apprenticeship. Since then he has worked for a range of businesses at the Port, including Beves, Sussex Haulage, Sussex Port Forwarding and then most recently for Shoreham Port Authority's Operations Division. Trevor was a skilled crane and forklift driver and has discharged and loaded a variety of cargoes

over the years, such as timber, potatoes, cocoa, cars, steel and bales of waste paper. Some of the cargoes came from as far away as the Falkland Islands and Africa, as well as many other destinations in Northern Europe. Outside work Trevor enjoys holidays with his wife in his motor home and photography.

There has been a sad loss in the Operations Division as one of their team has lost their battle with cancer and sadly passed away at the end of 2010. Alan Motterham, Commercial/ Operations Director said "We send condolences to the family and friends of our work colleague at this sad time".

Carl Aichroth, a long-standing member of the Diving and Civil Engineering Works team at the Port, has been promoted to

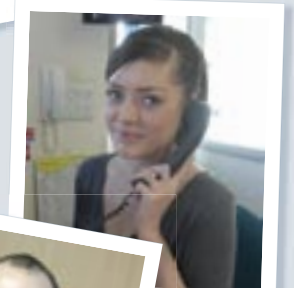
the role of Engineering Senior Supervisor. The new role is a natural progression for Carl, who has helped organise the work of the team for some years. Carl will spend more of his time planning construction, repair and diving works and supervising the work of the team and outside contractors on site.

Shoreham Port is delighted to announce that Joanne Mitchell has joined our team as our new receptionist. Joanne has spent the last few years working in various administration departments for local companies and will now apply her skills as the friendly face of the front desk of Shoreham Port's Nautilus House.

Shoreham Port continues to grow and diversify, and has recently appointed two new Non-Executive Directors. The positions have been filled by Stuart Condie and Ian Postlethwaite. They replace Brian Blundell and Don Turner, who completed their terms of office on 31st December 2010.



Stuart Condie



Jo Mitchell



Ian Postlethwaite



Carl Aichroth



Seabed Levelling with The Tug Adurni

Shoreham Port's Tug 'Adurni' has been contracted to provide seabed levelling for the Arun Yacht Club within the inter tidal area of Littlehampton Harbour. Seabed levelling is

a modern dredging technique used to manage the build-up of sediment. Arun Yacht Club are using the Tug 'Adurni' for maintenance dredging of their berths. It can be used for a range of tasks such as maintaining safe shipping channels, towage and unique marine and engineering projects. It is efficient in moving materials over short distances and is ideal for the relocation of clay, sand, silt and gravel.

French student Guillaume Robelet has been offered a six week work experience placement working at Shoreham Port on the Tug 'Adurni'. Guillaume is studying an Engineering degree in France and was keen to learn more about dredging techniques used here.



The arrival of a new lifeboat for Shoreham RNLi

Julian Seaman
- Harbour Master/
Director Marine
Operations



Port Angles for Wind Farm Business

Shoreham Port is keen to capture some of the opportunities from the proposed Rampion Offshore Wind Farm to be developed by E.ON Climate and Renewables. It is expected that construction of the wind farm will start in 2014. Over the next couple of years E.ON will be making their decisions about which port to use and we have been talking to them about establishing their operations and maintenance base at Shoreham.

If they develop their base here it will be a significant boost to the Brighton and West Sussex coastal area in terms of new business and employment opportunities. The Port can offer a suitable site and port facilities, but E.ON will also want to know about local suppliers and training provision in the area. A joint effort is needed and we are now talking to the local authorities, who in turn are talking to the colleges about providing a full package of support.

We have the important backing of the local MPs and local authority

leaders in promoting Shoreham as the best option for E.ON.

E.ON are still at an early stage in the planning of the wind farm, but are confident it will be developed and on time. Survey work is now underway and some of the survey vessels have been using Shoreham as a base.

Rampion will have the capacity to generate up to 650MW of power (enough electricity for 400,000 homes). The nearest wind turbine will be 13 km (8 miles) off the coast. Depending on the size chosen, there could be at least 100 wind turbines. These will be connected to a sub-station out at the wind farm, which will itself be connected to the shore. The cables are likely to come ashore in the Lancing/Worthing area and continue to the main sub-station at Bolney.

Shoreham is close to the wind farm site and in a good position to meet E.ON's needs. Although we are a busy growing port with very little spare land we will be able to accommodate them somewhere

on the Port. We have advantages over other ports in the south with our recent investment in facilities

and equipment and have good transport links as well as a city on our door step.



Laying the Foundations for Sustainable Paving

When an asphalt plant relocated away from the Port last year, we decided to use the 16,000 square metres (about four full-sized football pitches) to create an additional general cargo berth at the west end of our Brighton Terminal. "Our Commercial/

Operations Director, Alan Motterham, is always looking for more space", says Director of Engineering Tony Parker. "With our timber and steel importing trade and the export of both grain and woodchips booming, we need every available patch of land to be brought into port use."

Over the last four years, about 15 acres of new paved storage areas have been created through removing old structures and clearing up land. "Incredibly, we've managed to achieve all this while barely creating any waste to clog up our countryside at landfill sites", said Tony. "Every scrap of steel and other metals goes for recycling and almost nothing else leaves the Port."

Working in partnership with the Environment Agency, all the soil and other materials on our construction sites are analysed to ensure that no contaminated materials are present. Usually, the soils can then be combined to create a good solid foundation material for the new paving, while topsoil



and crushed concrete are found beneficial uses elsewhere.

For our latest paving scheme, 70% of our paving materials are recycled rather than using fresh raw materials, enabling the Port to make a valuable contribution to the environment at the same

time as finding more and more space for the Commercial/ Operations Director.



Tony Parker
- Director of Engineering

Diary of Events

20 February 2011
Brighton Half Marathon

10 April 2011
Brighton Marathon

29 April – 02 May 2011
Sussex Combined Clubs
Easter Regatta

27 May – 29 May 2011
Sussex Yacht Club Royal
Escape Race

04 June 2011
Canon firing at Shoreham
Fort , Sussex Yacht Club
Open Day

07 June 2011
Sussex Yacht Club
Sailability Day

12 July 2011
Shoreham Port's Annual
Public Meeting at
Southwick Barn 19:00

24 July 2011
Model Power Boat Race

Please see our website for
latest details and venues
www.shoreham-port.co.uk

Fertiliser Safe and Sound

There has been recent press coverage about the storage of fertiliser in the Port. It is an important product used by local farmers to boost crop yields. Shipping it from France is the most sustainable and safest method of transport. The risk to local people and businesses from storing the fertiliser in the Port is absolutely

minimal. Nevertheless, we take every precaution to ensure it remains safe. Planning permission to store the fertiliser was granted four years ago and we have always met the conditions required by the council. The fertiliser isn't in the Port all the time and when it is delivered by ship it doesn't stay long in the storage shed. We

work closely with East Sussex and West Sussex Fire and Rescue Services on maintaining safety standards throughout the Port and were inspected last year by both the Health and Safety Executive (HSE) and Vehicle and Operators Services Agency to ensure we are complying with all the regulations on storing and transporting the fertiliser.



Paul Johnson
- Safety and HR Director

Fishersgate Steel Terminal

Work is progressing apace on the next stages of the enormous new steel stockholding and processing factory developing on our 15 acre Fishersgate Terminal. At more than 12,000 square metres, the building now rising steadily out of the ground next door to the stockyard gantries has a footprint as large as three football pitches.



The underground foundations are now complete after having set a unique set of construction challenges for the builders, Mitchell Design & Construction. Hundreds of concrete piles 16 metres long had to be driven into the ground through the sturdy remains of the old Brighton 'B' Power Station coal yard. The obstructions encountered included a complete underground

railway for transporting coal around the old stockyard!

Watch out for the arrival in the spring of the giant steel frame for the three-storey building to be erected on the newly placed foundations.

PORT FACT:

The area of water in our impounded basin, the Canal, could fit four complete London Olympic Stadiums in it.

Basin Road Closed for the Short Run

The Brighton Half Marathon is due to take place on Sunday 20th February 2011 and the western tip of the course is Hove Lagoon. Please be aware that on race day access to Basin Road North from the A259 at Hove Lagoon will be restricted for at least part of the day.

For detailed information on the half marathon please refer to the official website – <http://brightonhalfmarathon.com> or contact Brighton Half Marathon on 01737 814844 or email – halfmarathon@sussexbeacon.org.uk

Welcoming Runners and Supporters of the Brighton Marathon



The UK's most exciting new major race is back this year running through Shoreham Port. Brighton Marathon is planned to be even bigger and even better this year with an anticipated 100,000 visitors.

Brighton Marathon is going to be held on Sunday 10th April 2011. The course is very similar to the route used last year with the 20 to 23 mile section of the course running along Basin Road South.

Shoreham Port has been working closely with the Brighton Marathon event coordinators on all safety aspects. Prior to the event Shoreham Port conducts a full event risk assessment to ensure there is sufficient access for ambulances and that there is a much needed drinks station in place.

Approximately 1,000 cubic metres of timber will need to be moved in order to make space for the runners and spectators. A sweeper truck and litter pickers will then check the course is clear and remove any other obstacles.

Pedestrian access across the locks will be improved this year through introducing a number of one way systems to control the flow

of traffic. At gate 8 a spectator crossing point will also be set up.

There will be a range of entertainment organised for the day including informal music which will be played along Basin Road South, the Port's impressive cranes will be set up across the course and other attractions.

For detailed information on the marathon please refer to the official website – <http://brightonmarathon.co.uk> or contact Brighton Marathon on 08453 100088 or info@brightonmarathon.co.uk



Sara Bassett
– Finance
Director