

250 YEARS



PORTlife



Inside this Issue

Trust Port Status Retained . 250 Years Celebrated at the Open Day . Shipwrecks, Storms & Murder
The Giant Pipeline . Meet our People . Stories from around the Port . Diary Dates for 2010/11

Welcome to Portlife 2



A very warm welcome to Portlife number 2. Since our first issue we have received positive feedback on the changes that we have made, improving the openness and transparency of the Port. Portlife is one of the ways in which we

keep our staff, customers, public, contractors and all port users up to date on our activities, together with our information packed website and Annual Report.

The last six months have been very busy. We have met our statutory requirement to the Department for Transport (DfT) by reporting in April on our Structural Review and making final preparations to the Port Masterplan which we will submit to the DfT in October. Other highlights were a well attended public meeting and the Shoreham Port Open Day in July attended by over 15,000 visitors. We also facilitated a one mile pipeline, constructed in the Port and towed out to Friars Bay, east of Brighton in September. In addition all other

day to day operations continued to run efficiently and smoothly.

Our public consultations on the Port Masterplan were well received in July; this was a great opportunity for us to demonstrate to all our stakeholders our long term plans for the Port. Since then, Rombus Terminal has been flattened and resurfaced and the construction of the Parker Steel processing facility has commenced.

Trading wise the Port continues to perform well, with cargo tonnage about 7% above last year, particularly good performers were aggregates, grain and steel. The outlook for the remainder of the year looks steady.

Finally, I would like to thank

the staff for their excellent help over the summer, not only for organising and running the Open Day, but also for their flexibility in working around the construction of the Friars Bay pipeline and its final departure from the Port, which was a major event.

As ever, we would welcome feedback and contributions to future articles related to the Port. Please send us ideas by post or through the contact form on our website www.shoreham-port.co.uk

I hope you enjoy this second newsletter - keeping you in the picture.

Rodney Lunn – Chief Executive

Trust Port Status Retained

The future of Trust Ports has been widely discussed over the last year. The Port completed and submitted a Structural Review to the DfT in April

where the Board of Shoreham Port decided against voluntary privatisation and instead to continue with the present strategy of further commercialisation. The Board believes that we will

better serve the community and continue to develop a modern, viable and vibrant port that continues to create jobs and local opportunities as a Trust Port.

We are pleased to advise that we have heard from Mike Penning MP, Parliamentary Under Secretary of State, that Shoreham Port will not be privatised. He

commented in his letter "I have now considered the proposals contained in your report to the Department. I am grateful for the time, effort and thought you have put into the production of this document and I am content to accept your report as the basis for the future direction of your port".

Our Vision of the Future

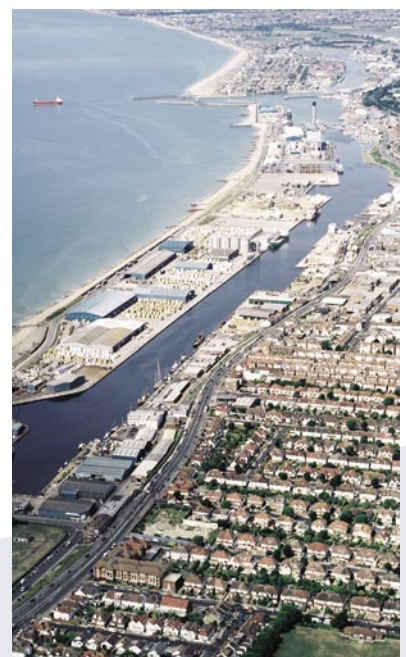
We have been developing a Masterplan for the Port. Working with Hyder Consulting we published a draft version in July and have since been talking to local people and organisations about our proposals for the future development of the Port. We intend to submit the final Masterplan to the Government by the end of October. The focus of our plan is about making the most of what

we already have. There is real potential to grow the Port and we are aiming for 25% growth in cargo over the next 15 years through both existing and new customers.

The largest changes are proposed for the Western Arm, with port operators possibly relocating into the main part of the Port. This will allow redevelopment of this area for housing, leisure or other activities. You are also likely to see positive

changes at Southwick Waterfront and North Quayside. Aldrington Basin is under review.

We continue to work closely with the local authorities on the subject of regeneration of the wider harbour area and believe the Masterplan will provide a firm basis for future planning. We have been very pleased with the high level of interest and input people have made to the Masterplan. More information on the Masterplan including a full set of plans can be found on the website www.shoreham-port.co.uk/masterplan





Celebrating 250 Years at the Heart of the Community

On July 18th the Port celebrated its 250th anniversary with a very successful Open Day. Our staff spent 10 months planning every detail to ensure that all went smoothly and that there were lots of great activities on the day.

Rodney Lunn, Chief Executive, said "Shoreham Port has been at the heart of the community for the last 250 years and we had a fantastic day seeing so many people enjoying themselves and learning more about the Port. It was a charity event which has raised over £6,000 and we would like to thank everyone for giving

so generously. There was something for the whole family from HMS Shoreham, to boat trips, to Peter James the crime writer signing books. Well over 15,000 people attended the event and hopefully they all went home having had a great day out at their local port".



Public Meeting 2010

Each July we hold a public meeting in the Barn Theatre in Southwick presenting our plans for the future of the Port, discussing ideas and addressing any concerns that you raise.

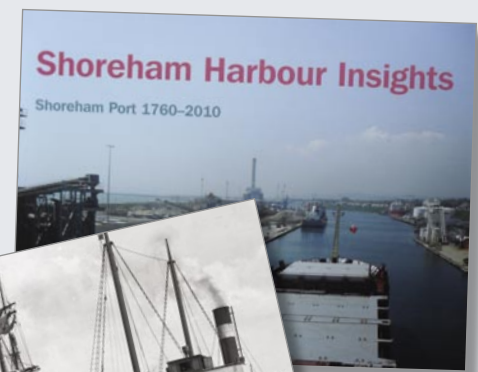
This July we had a great turnout, with attendance from a broad cross section of our local community. The question and answer session was very good, with many excellent points raised. A big thanks to those that attended.

Shipwrecks, Storms and Murders

For our 250th Anniversary the Port commissioned a book showing the history of Shoreham Port and Harbour. It is a great memento and essential reading for anyone who has connections with Shoreham-by-Sea. The book is packed full of exciting stories, from shipwrecks and vicious storms, to smuggling and even murders. The foreword was written by Peter James who uses Shoreham Port for inspiration for his novels. Good detective work located the various photographs and unique illustrations for the book, many of which have never been seen before. It brings to life the many changes the Port has

been through over the last 250 years and a glimpse of what we hope Shoreham Port will be in the future. Copies of the book can be obtained from Nautilus

House, City Books, Marlipins Museum, Step Back In Time and Bookworms of Shoreham.



The Port and the Giant Pipeline

You may have seen a 1.8 kilometer long pipe for Southern Water being assembled at the Port. This was the Friars Bay Long Sea Outfall Pipe, which when commissioned, will take treated sewage further out to sea than the existing pipe,



thus helping to create cleaner seas for us all.

The works at sea started in May, dredging a 1,800m trench for the pipe. In July the pipe was towed from Norway in four sections to Shoreham Port. The pipeline was towed into the Canal over the land on the south side of the Prince Philip Lock. During the following 6 week period, eight hundred 1.8m diameter concrete collars were slid over the plastic pipe and all sections were joined together and towed to Peacehaven.

It was a unique operation as both lock gates had to be open at the same time. This



meant that a spring high tide was required so there was level water both inside and outside the port locks. The whole operation had a tidal window of just 60 minutes. With the expertise of the port marine and engineering staff, and Land & Marine's team the manoeuvre ran efficiently and to plan in 57 minutes!

The Port was only closed for 4 hours while the pipeline was towed through the Prince George

Lock, into the Eastern Arm and out to sea. There were 14 vessels involved in the tow out from tugs to workboats to pilot cutters and patrol crafts.

This amazing project shows how versatile Shoreham Port can be to accommodate not only commercial and leisure vessels but also engineering projects. To see video footage of the construction of the pipeline please visit our website.



A Day in the Life of Darren Todman

Darren Todman joined Shoreham Port over two years ago as Tug Crew. Darren has since been promoted to Assistant Tug Master, responsible for assisting the Tug Master in the day to day operations on the tug Adurni. This involves towing other vessels, hydrographic surveying and dredging the seabed to ensure there is a safe shipping channel into the Port. As part of the Port's Hydrographic Team he takes the Port's survey vessel Capella out to identify shoaling areas. High spots and submerged

obstructions are identified through measuring tides, currents and soundings from ultra sound. Once this hydrographic data has been collected, Darren knows where to commence the bed levelling. This entails dropping a plough into the water, towing it across the high spots on the seabed and then relocating the deposits to a deeper location.

Darren's working hours are varied and heavily influenced by the tide. His 8 hour shift can be any time around the clock, any day of the week and can include overnight stays at neighbouring

Ports. The demand for bed levelling varies depending on the prevailing weather conditions, tides and types of sediment. Darren has completed bed levelling services for Newhaven, Chichester, Sovereign, Littlehampton and Portsmouth Harbours.

Prior to becoming the Assistant Tug Master Darren was a chef for 9 years. Needless to say they never go hungry on the tug. He was also a kayaking and dinghy sailing instructor in Pennsylvania.



All Aboard Patrol Vessel Spica

Since early spring Shoreham Harbour Patrol have been patrolling the waters in the Patrol Vessel Spica, assisting the Harbour Master with incident investigation, enforcement of byelaws and educating harbour users of safety on the water. Additionally this is to ensure that all vessels are displaying valid Harbour Dues. We've also made it easier to update your vessel's details by visiting our website www.shoreham-port.co.uk/marine/harbour_dues or by visiting Nautilus House.

Julian Seaman
– Harbour
Master



Tenants Flourish at the Port

We welcome Michael's Wood Restoration Workshop, run by local resident Michael Coles as a new tenant to Lady Bee Marina. Other new tenants are also flourishing, Edburton Contractors have secured a contract for

Brighton and Hove City Council's road maintenance and South Coast Bikes have increased their turnover and purchased another van for their bike collection and repair service. Established tenants Animazoo are working on hi-tech interactive theme park

attractions for Ferrari World in Abu Dhabi and Monster Studios continue to provide rehearsal space to the local music industry under the management of new owner, Jason Day.

We have appointed Tim Hague as Property Manager to maintain regular contact with all tenants and provide responsive property management. We have also contracted the locally based Sparkle South Coast Cleaning firm for Quayside House and Waterside House and are improving our commercial properties with ongoing maintenance and enhancement programmes.

As well as focusing on the quality of services within our existing commercial centres, we are working to release the potential of underused locations. Kingston Railway Wharf, an important site in the history of Shoreham Harbour, will again become a hub of activity under plans by Day Aggregates Ltd. Planning permission has been granted for the temporary use of the site for bagging aggregates.



Diary of Events

Coming up:

13 October 2010
Port User Group

13 October 2010
Local Authority
Liaison Committee

10 April 2011
Brighton Marathon

12 July 2011
The Annual Public
Meeting 7pm

Please see our
website for latest
details and venues
www.shoreham-port.co.uk

Shoreham to Become Eco-Port

One of the likely growth areas for the Port is in renewable energy. We have been talking to E.ON about the role we can play in the off-shore wind farm proposed off the Sussex coast and we are talking to Edgeley Green Power about the possibility of building a new power plant on the Port.

E.ON is looking to build a 650MW wind farm 8 miles off the coast. This will bring considerable economic benefits to the area. Shoreham Port is already being

used by survey vessels and is well placed to become both a base for the construction phase and a permanent home for the operation and maintenance of the farm once built. If the project gets the green light it could be starting on site in 2014.

Edgeley are applying for planning permission to build a micro energy plant that will generate electricity fuelled by waste and inedible vegetable and industrial oils. They plan to install 4 large diesel engines with a power generation capacity of

approximately 36MW at Fishersgate Terminal, next to the existing power station. The great advantage of the project is that the fuel will come in by ship, avoiding the use of road tankers. If approved, the power plant will be built next year and become fully operational in 2012.

Other ideas we are exploring are the installation of solar panels on our warehouse roofs and erecting medium sized wind turbines on the seaward side of the main port area. We are working with a specialist firm to investigate the technical

feasibility and the idea of setting up a community based company to enable local firms and residents to become stakeholders and benefit from low cost electricity.

Renewable energy is a big part of our plans and will help us become recognised internationally as an eco-port.

Peter Davies
- Development Director



Bigger and Faster for 2010

It's been a busy six months for Shoreham Port's Operations, with year on year growth in our bulk, steel and cereal cargoes and we are also seeing timber volumes on the increase.

In June, MV Hajo arrived at Shoreham Port from Sweden carrying 7,000 cubic metres of timber. This was discharged by our stevedoring operations department at the fast rate of 400 cubic metres per hour using a single crane. Jonsson Nova operates a weekly service to Shoreham Port from Sweden's east coast, the MV Hajo being the largest of the liner service vessels. Video footage of the timber unloading operations can be viewed on our website – www.shoreham-port.co.uk

With the increase in volumes it comes as a relief to see Rombus terminal resurfaced. Once power and connectivity arrive on site we look forward to filling this terminal with various cargoes.

We continue to look for new business and to attract new cargoes into the Port as well as visiting our current customers to ensure we understand their future requirements.

Alan Motterham
- General Manager



Career Moves

We have awarded an apprenticeship to Lee Austin as a Tug Assistant Engineer. As well as learning new engineering skills Lee will also start a challenging training programme, ensuring skills such as boat handling, seamanship and rope work are to the standards that are expected of a mariner. Another new employee is Nicola Goldsbrough who has taken on the role of Reception/Executive

Assistant. Nicola, a graduate from Loughborough University, has joined the team after relocating from Warwickshire. We are also pleased to announce that one of our longer serving employees James Knight, has accepted a new contract that takes him beyond the usual retirement age. The Operations Department has recently promoted Jacqui Gawlik to Assistant Manager Accounts & Operational Systems.



Training for Excellence

Ryan Baker successfully completed his diving course as featured in our last Newsletter. Our commitment to training also sees Property Manager, Tim Hague, enrolling on the Royal

Institute of Chartered Surveyors professional development programme. Our Deputy Harbour Master, Will Barker, is completing his Harbour Masters Diploma and Dave Bunker, Assistant Stevedore Manager, will be starting the

NEBOSH General Certificate Health Et Safety course. Lorraine Halliday has completed her level 2 Association of Accountant Technicians. Paul Johnson is now a chartered Safety and Health Practitioner.

Shoreham Port, Safe and Sound

Shoreham Port has a responsibility to its employees and the local community who may be affected by its undertakings. Following an accident by a local school pupil, who unfortunately injured themselves whilst jumping from

the eastern breakwater into shallow water, the Port helped deliver a safety message to Shoreham Academy School.

The Port belongs to the Port Skills and Safety Group which enables the Port to share best practices that have been tried and tested by other ports and organisations. A Health and Safety Committee meeting takes place every 2 months and is attended by departmental safety representatives.

Annual Fire Risk Assessments have been a priority over the past few months and all Fire Risk Assessments have been carried out throughout the Port's main offices, sheds and outbuildings. The collation of Fire Risk Assessments from our tenants will be our next priority.



In addition, refresher training in manual handling techniques is due to be rolled out to all our staff over the next few months.

The 250th Open Day celebration was a success with minimal incidences having to be dealt with by our in house trained first aid teams. The planning and risk assessments coordinated with local authorities ensured

the grand finale to the day ended with a magnificent fire work display launched from a boat within the canal.

Paul Johnson
– Safety and HR Manager



Full Steam Ahead for Adur Dry Dock

The Port's Adur Dry Dock is back in full swing following extensive refurbishment of its 75 year old gates and pumps. The dry dock was created from the Port's original Victorian lock in 1934 after the new Prince George Lock was opened. Today it is one of the few dry dock facilities remaining on the south coast.

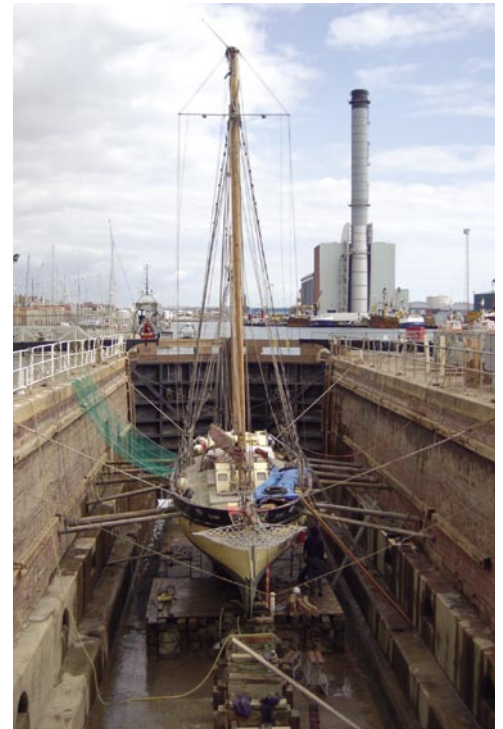
The gates' timbers had to be replaced as they had deteriorated, making the dock difficult to drain down and keep dry enough to use. The new wooden parts, up to 7 metres long and weighing

over 1.5 tonnes each were cut from a super-heavy hardwood called Greenheart, which comes from sustainable sources in Guyana. The cast steel and iron frames and fittings on the gates were found to be in remarkably good condition for their age and have been kept, though with a new steel facing plate and several coats of fresh paint.

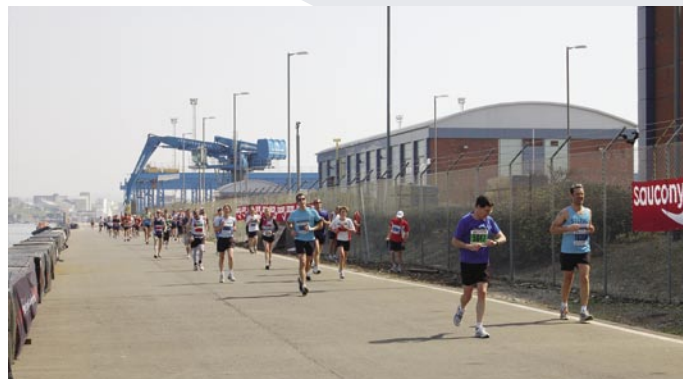
As soon as the new gates were put back in place, the dock was put to use by the 100 year old gaff-rigged ketch Speedwell, needing urgent repairs to her wooden hull frames and planks.

For more information on the dry dock please visit www.shoreham-port.co.uk/dry-dock or contact Brian Rousell (Deputy Port Engineer) on 01273 598113, or Keith Wadey (Assistant Port Engineer) on 01273 598101.

Tony Parker
- Port Engineer



Our Local Community Matters



Shoreham Port proactively supports our local community by encouraging community growth and development. As part of this, the Port considers sponsorship of local charities and events. Last April the Port sponsored Matthew Rhodes, on behalf of St Dunstan's charity, to run the Brighton Marathon, and raised over £6,000 at our Open Day in July. In

addition, the Port has taken on two students for work experience in engineering and general port activities.

Sara Bassett
- Financial Controller



PORT FACT:

The biggest export from Shoreham is grain. Over 100,000 tonnes of oats, barley, wheat and oil seed rape leave the Port each year for destinations all over Europe. We even export Sussex oats to Scotland for porridge.